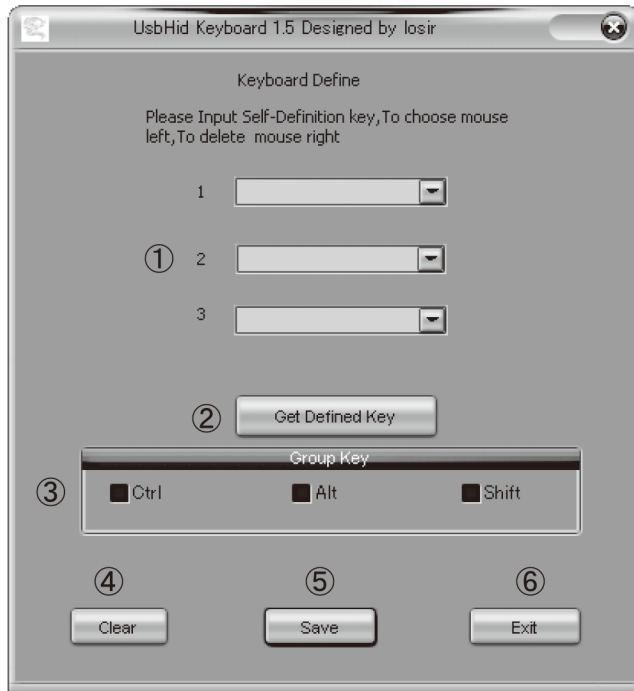


USB 3FOOT SWITCH 2 INSTALLATION GUIDE

※Please copy the folder inside this installation CD-ROM onto any location on your hard disk to start the operation.



- ① Key Define Window
- ② Defined Key Confirmation Button
- ③ Group Key Define Box
- ④ Clear Button
- ⑤ Save Button
- ⑥ Exit Button

Default Defined Keys

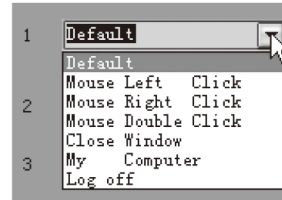
- 1: Left Click on Mouse
- 2: Double Click on Mouse
- 3: Right Click on Mouse

① Key Define Window



Please choose the favorite key from the drop down menu.
Selection of Pre-Defined Keys

- | | |
|--------------------|-------------------------|
| Default | (Default) |
| Mouse Left Click | (Left Click on Mouse) |
| Mouse Right Click | (Right Click on Mouse) |
| Mouse Double Click | (Double Click on Mouse) |
| Close Window | (Close Window) |
| My Computer | (My Computer) |
| Log off | (Log Off) |



【How to Define your Favorite Key】

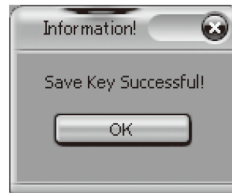
By pointing the mouse cursor and right click on the defined key, the box appears as blank. Now you can choose your favorite key by hitting the key as you wish to define on your keyboard.



② Defined Key Confirmation Button



By pressing this button while the device is connected to USB port, the defined key will show up on the window.



When key assignment is successful, this screen shows up



When defined key is recognized, this screen shows up

③ Group Key Define Box



By selecting each group key define box, simplified key function can take into effect. By ticking "Ctrl" box, it works as the same as pressing "Ctrl" and "C" on your keyboard. By selecting multiple define-boxes (such as "Alt" and "Shift" shown on the window), it works as you are pressing "Alt" and/or "Shift" simultaneously.)

【Warning Window】



When key assignment is not cleared but try to define another key, this screen shows up. If you wish to define a new key, please clear the key define box (make it blank)



Defining the key or pressing the defined key display while the device is not connected to USB port, this screen shows up